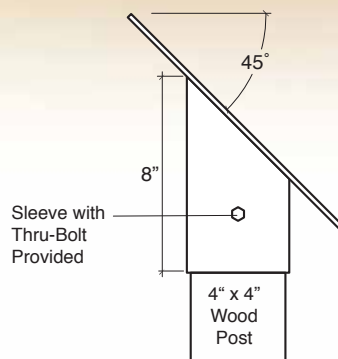
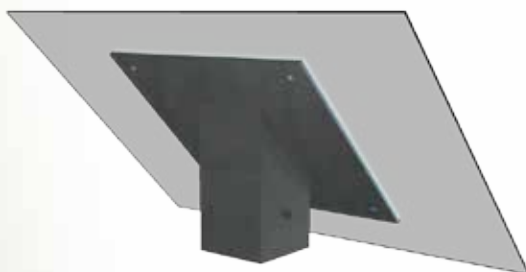
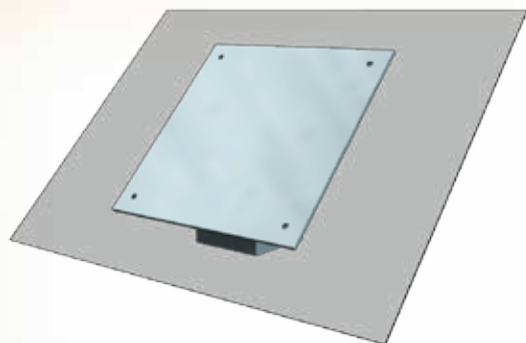
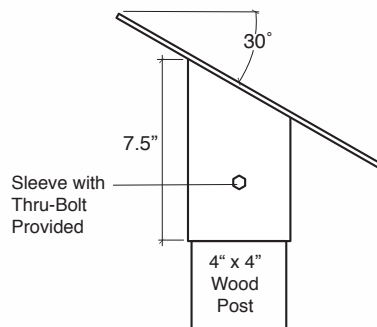


\*\* Custom sizes and colors available upon request

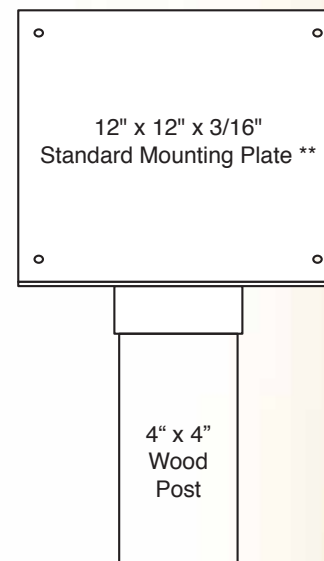
Part #: WPP1212-45 45 Degrees 12" x 12" Mounting Plate  
WPP1212-30 30 Degrees 12" x 12" Mounting Plate



**SIDE**



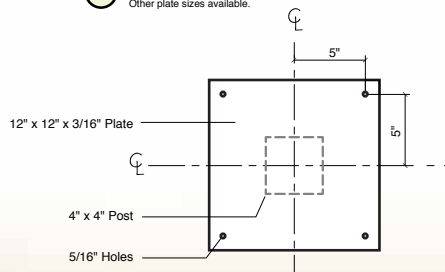
**FRONT**



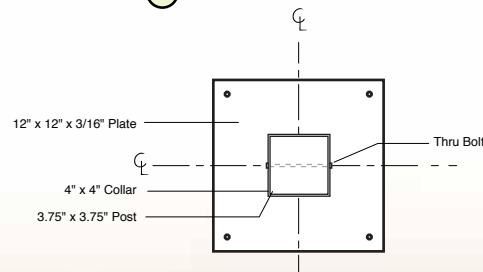
"Tamper Resistant Bolts" to attach graphics are available with our graphic panels.  
Fasteners to attach this item to concrete are available at hardware stores.

## ① Mounting Plate

Other plate sizes available.



## ② Base Dimensions



## ③ Attaching Panel to Hardware

Tamper Resistant Bolt:  
• Stainless Steel 1/4" - 20 Thread.  
• Anti-vandal Button Head

