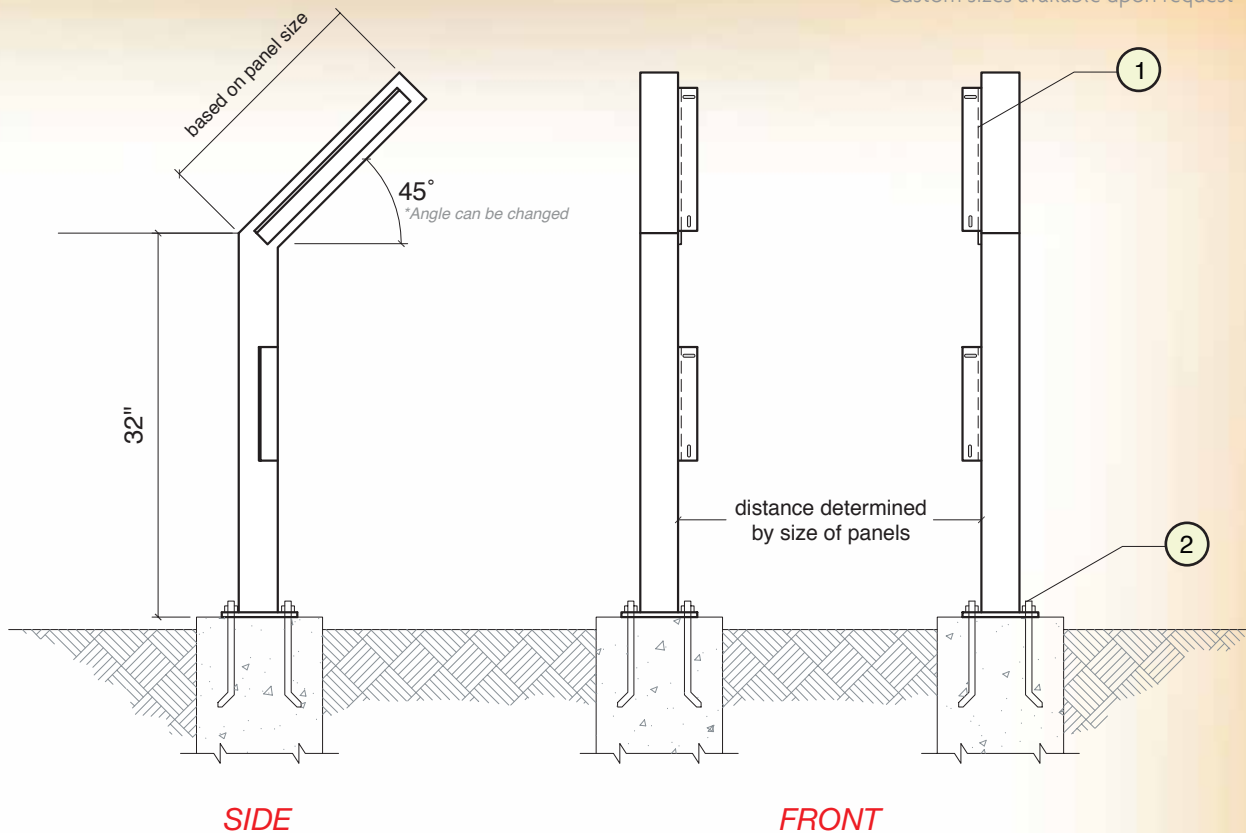




CD224



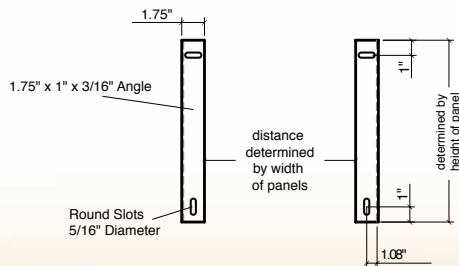
CDD224
(with secondary panel)



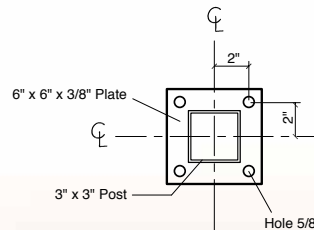
SIDE

FRONT

① Mounting "L" Shaped Brackets

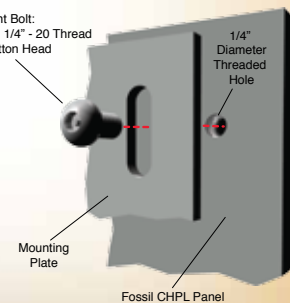


② 6" x 6" Base Plate (3x3 Post)



③ Attaching Panel to Hardware

- Tamper Resistant Bolt:
- Stainless Steel 1/4" - 20 Thread
- Anti-vandal Button Head



"Tamper Resistant Bolts" to attach graphics are available with our graphic panels. Fasteners to attach this item to concrete are available at hardware stores.